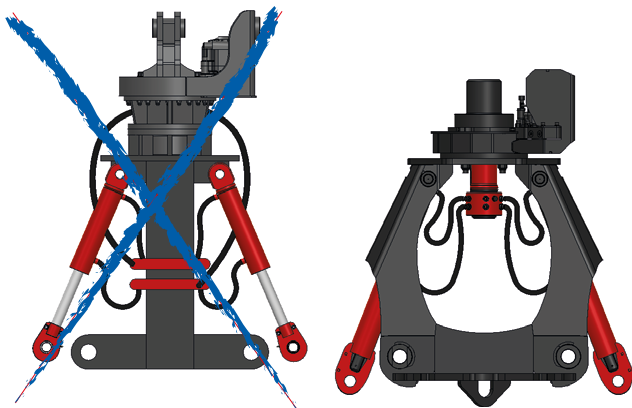


SCE 
ScrapKing
 by GUSELLA-BAKKER

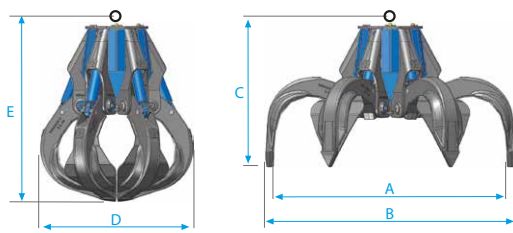


5 Ton. 11.0 - 51.8

SCRAP
 RUBBLE
 WASTE MATERIAL



We have eliminated the necessity of a central column. Now the unique base of the Scrap King SCE Orange peel grapple is built entirely using high tensile steel. The design allows for minimum amount of welding. Therefore the structure is far more rigid than what other grapples can offer. This has enabled us to create room in the centre of the base to accommodate the hydraulic components and parts of the innovative GRI rotator. Because of that our Scrap King SCE and other Orange Peel grapples we have to offer require far less height than any other prapple available on the market today.



Type of link
Attacchi disponibili

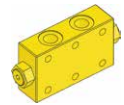


Type of teeth
Pale disponibili



Model	Link type	Teeth available		Capacity	Weight	Load	Pressure	Teeth	S Ton.	Dimensions				
		Standard	Special							cu yd.	lb.	S Ton.	Max Psi	N.
SCE 404	PE	1	0-2-3	0.52	1377	3,85	5200	4	11 - 19.8	72	79	41	49	53
SCE 404	K (GR16 S 203)	1	0-2-3	0.52	1664	3,85	5200	4	11 - 19.8	72	79	50	49	63
SCE 404	E (GRI12)	1	0-2-3	0.52	1796	3,85	5200	4	11 - 19.8	72	79	52	49	64
SCE 405	PE	1	0-2-3	0.52	1543	3,85	5200	5	11 - 19.8	72	79	41	49	53
SCE 405	K (GR16 S 203)	1	0-2-3	0.52	1878	3,85	5200	5	11 - 19.8	72	79	50	49	63
SCE 405	E (GRI12)	1	0-2-3	0.52	1227	3,85	5200	5	11 - 19.8	72	79	50	49	64
SCE 406	PE	0	1-2-3	0.52	1918	3,85	5200	6	11-22	72	79	41	49	53
SCE 406	K (GR16 S 203)	0	1-2-3	0.52	2314	3,85	5200	6	11-22	72	79	50	49	63
SCE 406	E (GRI12)	0	1-2-3	0.52	2314	3,85	5200	6	11-22	72	79	52	49	64
SCE 504	PE	1	0-2-3	0.63	1851	5.5	5200	4	13.2-19.8	76	84	49	53	59
SCE 504	E (GRI12)	1	0-2-3	0.63	2347	5.5	5200	4	13.2-19.8	76	84	58	53	70
SCE 504	E16 (GRI 16)	1	0-2-3	0.63	2392	5.5	5200	4	13.2-19.8	76	84	59	53	71
SCE 505	PE	1	0-2-3	0.63	2160	5.5	5200	5	15.4-19.8	76	84	49	53	59
SCE 505	E (GRI12)	1	0-2-3	0.63	2656	5.5	5200	5	15.4-19.8	76	84	58	53	70
SCE 505	E16 (GRI 16)	1	0-2-3	0.63	2700	5.5	5200	5	15.4-19.8	76	84	59	53	71
SCE 506	PE	0	1-2-3	0.63	2469	5.5	5200	6	15.4-22	76	84	49	53	59
SCE 506	E (GRI12)	0	1-2-3	0.63	2965	5.5	5200	6	15.4-22	76	84	58	53	70
SCE 506	E16 (GRI 16)	0	1-2-3	0.63	3009	5.5	5200	6	15.4-22	76	84	59	53	71
SCE 554	PE	1	0-2-3	0.72	2019	6.06	5200	4	16.5-25.3	80	88	48	56	63
SCE 554	E (GRI12)	1	0-2-3	0.72	2477	6.06	5200	4	16.5-25.3	80	88	59	56	73
SCE 554	E16 (GRI 16)	1	0-2-3	0.72	2522	6.06	5200	4	16.5-25.3	80	88	60	56	75
SCE 555	PE	1	0-2-3	0.72	2288	6.06	5200	5	18.7-26.4	80	88	48	56	63
SCE 555	E (GRI12)	1	0-2-3	0.72	2777	6.06	5200	5	18.7-26.4	80	88	59	56	73
SCE 555	E16 (GRI 16)	1	0-2-3	0.72	2839	5.5	5200	5	18.7-26.4	80	88	60	56	75
SCE 556	PE	0	1-2-3	0.72	2700	6.06	5200	6	19.8-30.8	80	88	48	56	63
SCE 556	E (GRI12)	0	1-2-3	0.72	3196	6.06	5200	6	19.8-30.8	80	88	59	56	73
SCE 556	E16 (GRI 16)	0	1-2-3	0.72	3240	6.06	5200	6	19.8-30.8	80	88	60	56	75
SCE 604	PE	1	0-2-3	0.78	2872	7.0	5200	4	19.8-30.8	83	90	56	58	69
SCE 604	E (GRI12)	1	0-2-3	0.78	3368	7.0	5200	4	19.8-30.8	83	90	66	58	79
SCE 604	E16 (GRI 16)	1	0-2-3	0.78	3412	7.0	5200	4	19.8-30.8	83	90	68	58	81
SCE 604	E1 (GRI 25)	1	0-2-3	0.78	3655	7.0	5200	4	19.8-30.8	83	90	69	58	82
SCE 605	PE	1	0-2-3	0.78	3348	7.7	5200	5	20.9-35.2	83	90	56	58	69
SCE 605	E (GRI12)	1	0-2-3	0.78	3813	7.7	5200	5	20.9-35.2	83	90	66	58	79
SCE 605	E16 (GRI 16)	1	0-2-3	0.78	3858	7.7	5200	5	20.9-35.2	83	90	68	58	81
SCE 605	E1 (GRI 25)	1	0-2-3	0.78	4133	7.7	5200	5	20.9-35.2	83	90	69	58	82
SCE 606	PE	0	1-2-3	0.78	3911	8.8	5200	6	24.2-35.2	83	90	56	58	69
SCE 606	E (GRI12)	0	1-2-3	0.78	4365	8.8	5200	6	24.2-35.2	83	90	66	58	79
SCE 606	E16 (GRI 16)	0	1-2-3	0.78	4409	8.8	5200	6	24.2-35.2	83	90	68	58	81
SCE 606	E1 (GRI 25)	0	1-2-3	0.78	4695	8.8	5200	6	24.2-35.2	83	90	69	58	82
SCE 804	PE	1	0-2-3	1.05	3556	8.8	5200	4	24.2-35.2	93	99	57	65	73
SCE 804	E (GRI12)	1	0-2-3	1.05	3813	8.8	5200	4	24.2-35.2	93	99	68	65	84
SCE 804	E16 (GRI 16)	1	0-2-3	1.05	3858	8.8	5200	4	24.2-35.2	93	99	69	65	85
SCE 804	E1 (GRI 25)	1	0-2-3	1.05	4340	8.8	5200	4	24.2-35.2	93	99	70	65	87
SCE 805	PE	1	0-2-3	1.05	3844	9.9	5200	5	26.4-38.5	93	99	57	65	73
SCE 805	E (GRI12)	1	0-2-3	1.05	4299	9.9	5200	5	26.4-38.5	93	99	68	65	84
SCE 805	E16 (GRI 16)	1	0-2-3	1.05	4343	9.9	5200	5	26.4-38.5	93	99	69	65	85
SCE 805	E1 (GRI 25)	1	0-2-3	1.05	4629	9.9	5200	5	26.4-38.5	93	99	70	65	87
SCE 806	PE	0	1-2-3	1.05	4140	9.9	5200	6	29.7-40.7	93	99	57	65	73
SCE 806	E (GRI12)	0	1-2-3	1.05	4636	9.9	5200	6	29.7-40.7	93	99	68	65	84
SCE 806	E16 (GRI 16)	0	1-2-3	1.05	4680	9.9	5200	6	29.7-40.7	93	99	69	65	85
SCE 806	E1 (GRI 25)	0	1-2-3	1.05	4925	9.9	5200	6	29.7-40.7	93	99	70	65	87
SCE 1004	PE	1	0-2-3	1.3	4409	11	5200	4	35.2-49.6	97	107	65	72	80
SCE 1004	E16 (GRI 16)	1	0-2-3	1.3	4960	11	5200	4	35.2-49.6	97	107	78	72	92
SCE 1004	E1 (GRI 25)	1	0-2-3	1.3	5231	11	5200	4	35.2-49.6	97	107	79	72	94
SCE 1005	PE	0	1-2-3	1.3	5269	11	5200	5	35.2-51.8	97	107	65	72	80
SCE 1005	E16 (GRI 16)	0	1-2-3	1.3	5798	11	5200	5	35.2-51.8	97	107	78	72	92
SCE 1005	E1 (GRI 25)	0	1-2-3	1.3	6084	11	5200	5	35.2-51.8	97	107	79	72	94

OPTIONS



Check valve



Excavator link



Easy link for excavators



Suspension plate male



Mechanical rotator



Active Control Grip

SCE US 1.4

Weight classes refer to standard teeth

This data also indicates to choose the correct attachment check also excavator lifting capacities.

THE MANUFACTURER MAINTAINS THE RIGHT TO MODIFY ALL PRODUCTS IN ORDER TO IMPROVE PERFORMANCE.



10041 Carignano (To) Italy
Via Cagliari, 17
Tel. +39 011 9692684

info@gbna-attachments.com
GusellaBakkerNorthAmerica.com
info@gusella-bakker.com

6662 NG Elst (Gld) Netherlands
Nijverheidsweg 6
Tel. +31 (0)481-374757